

BROCHURE

Asunto Oy Mikkelin
Hänskinkulma

Linnankatu 8, 50100 Mikkelä



Brand-new homes in Mikkeli center, this is Mikkeli at its finest

Hänskinkulma is ideally located near the city center but still in a quiet corner of the Mikkeli center.

Modern and new homes located next to sports park is the best of Mikkeli center living. The apartments features a living room and an open kitchen, creating a spacious and modern layout, with a Scandinavian touch.

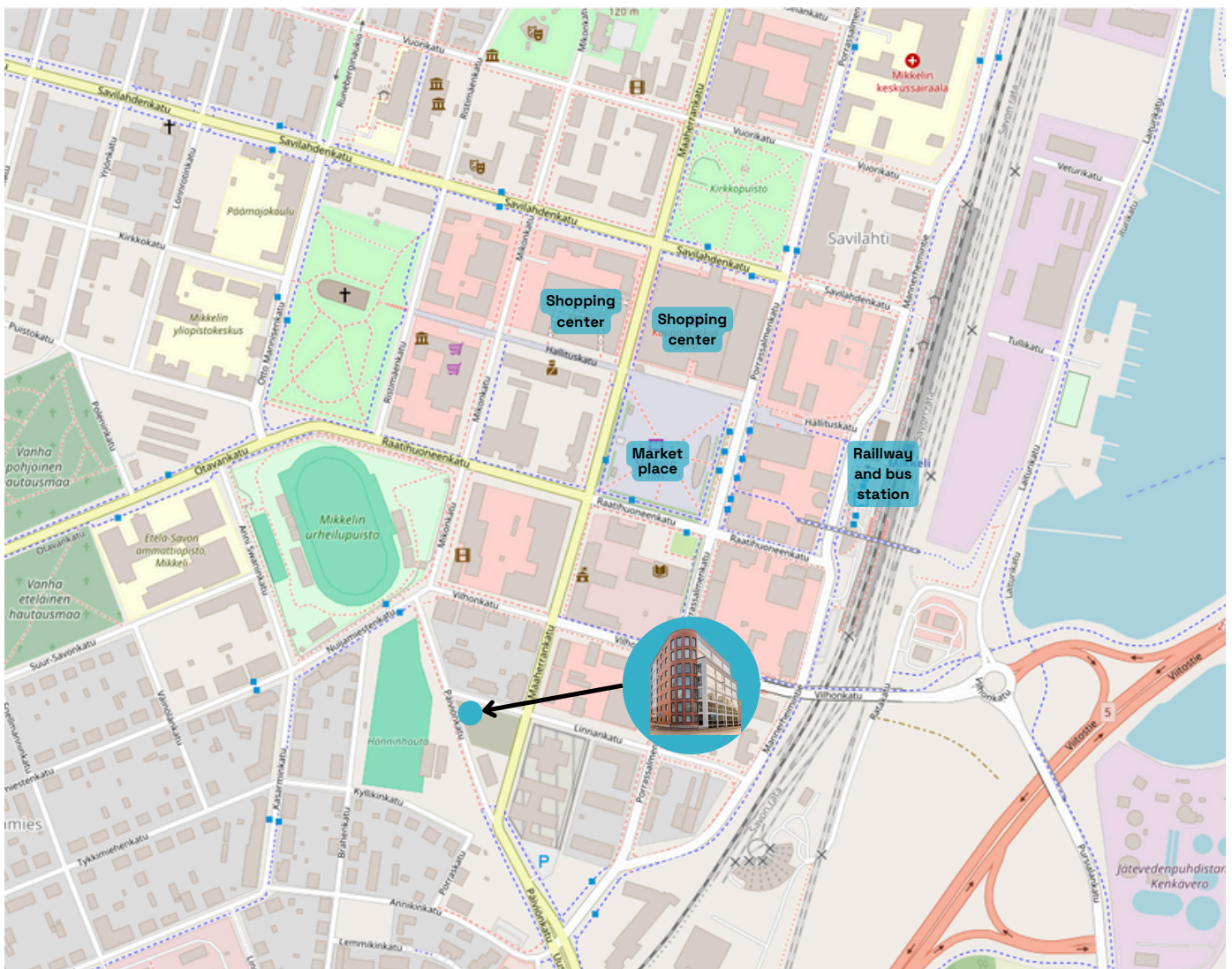
Everything you need is within easy reach:

- City center and market place 0,8 km
- Karkialampi 3,7 km
- Urpola outdoor trails 1,3 km
- Kalevankangas outdoor trails 2,1 km

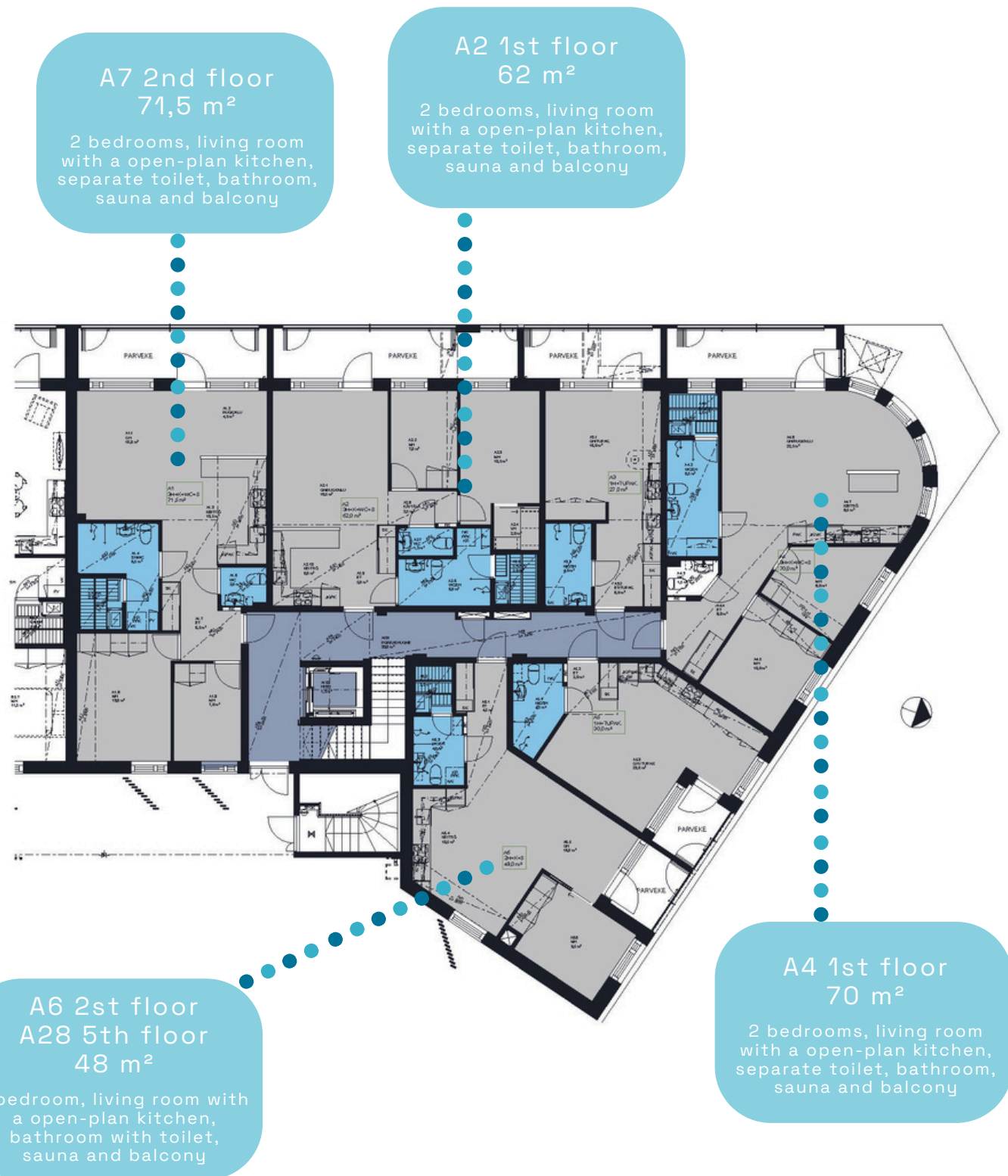


Jussi Myllymäki

jussi.myllymaki@jalon.fi
+358 45 225 9050



Building floor plans 1 - 5

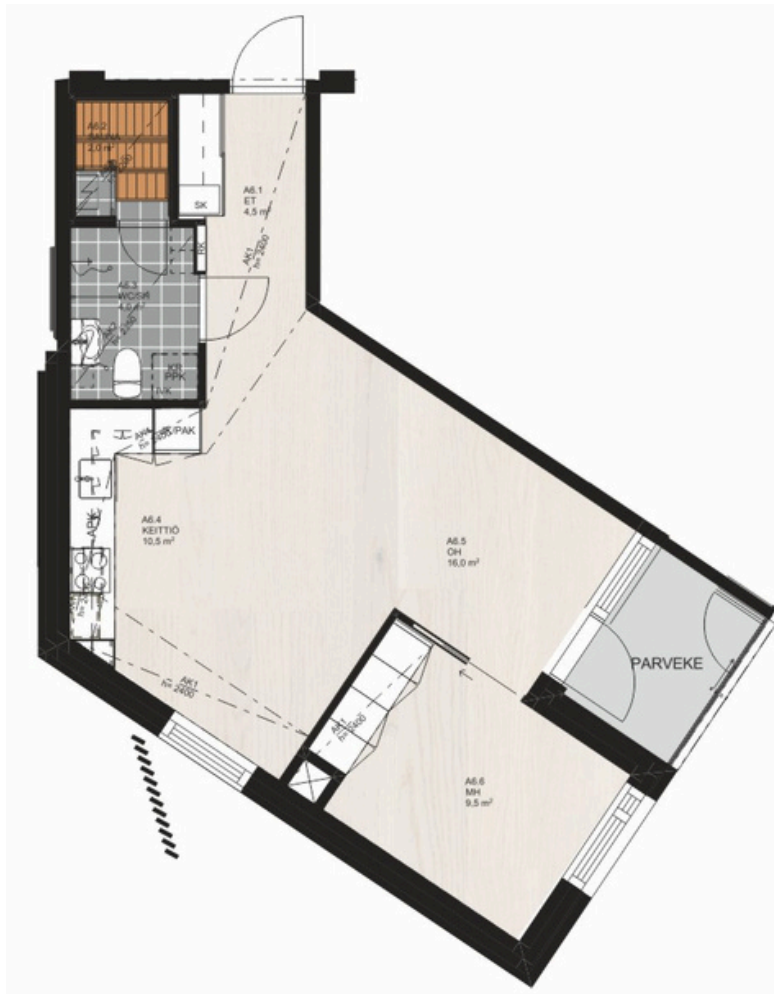


Basement level

Underground parking space €50 per month
Yard parking space €35 per month



Apartments



48,0 m²

A6 1.st floor

€1100 per month

A28 5.th floor

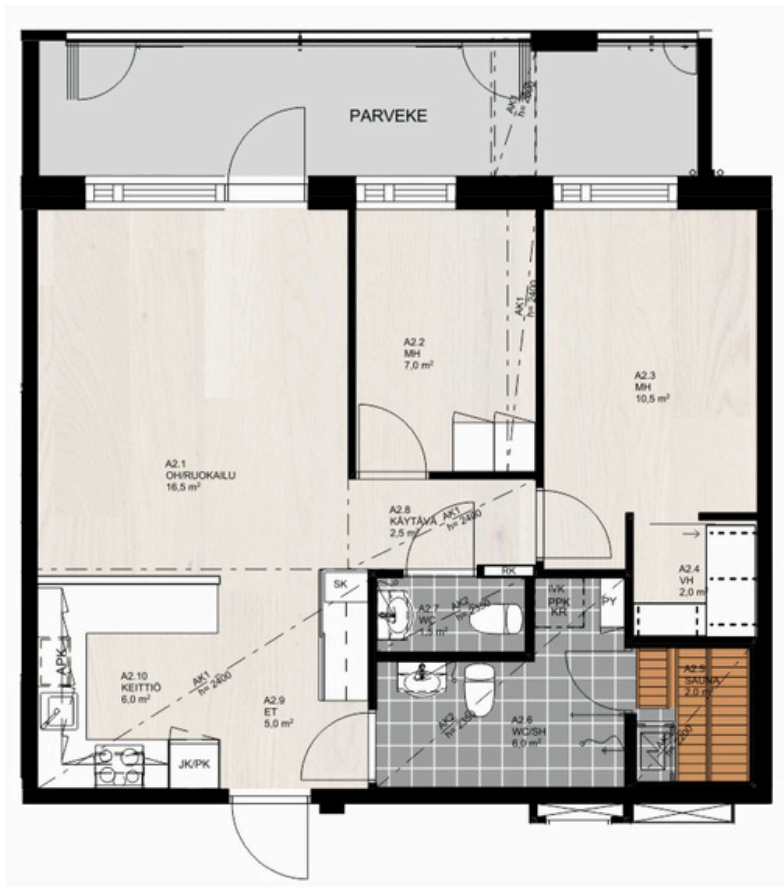
€1180 per month

“Efficient
with smart floor plans.”

Photos from apartment



Apartments



62,0 m²

A2 1.st floor

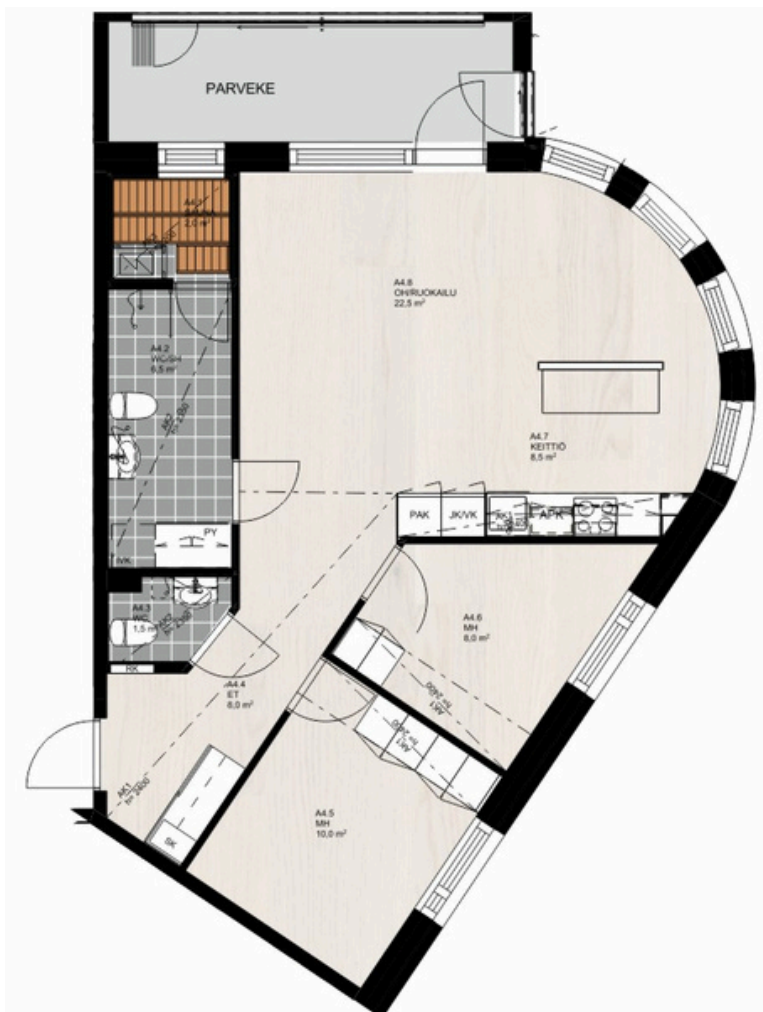
€1450 per month

“The spacious balcony
is a designer’s dream.”

Photos from apartment



Apartments



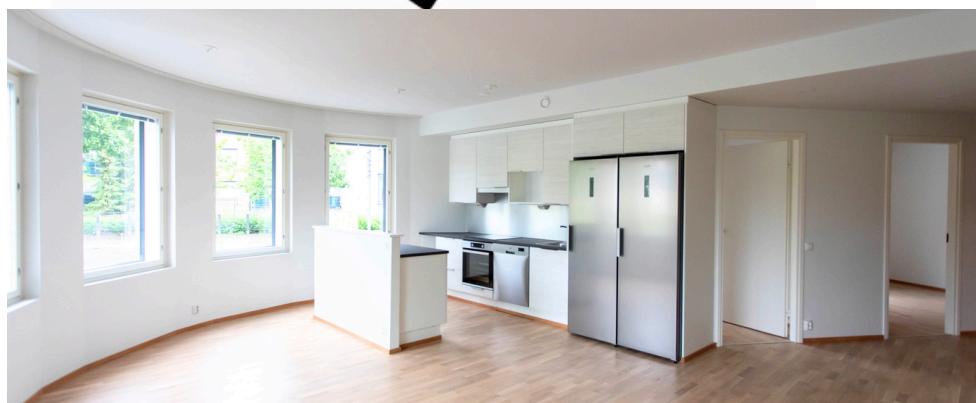
70,0 m²

A4 1.st floor

€1650 per month

”Personalized
roundness in the
spacious apartment.”

Photos from apartment



Apartments



71,5 m²
A7 2nd floor

€1660 per month

Apartment with windows on both sides with great natural light.

Photos from apartment

